

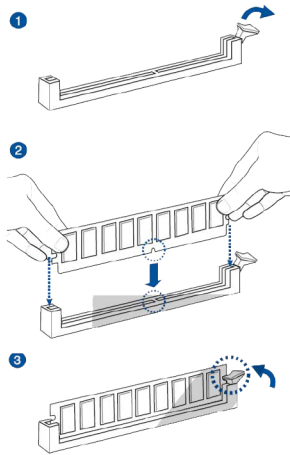


Motherboard installation instructions

Install Memory

When you install the CPU, make sure that the CPU you are using has anti-overheating chips.

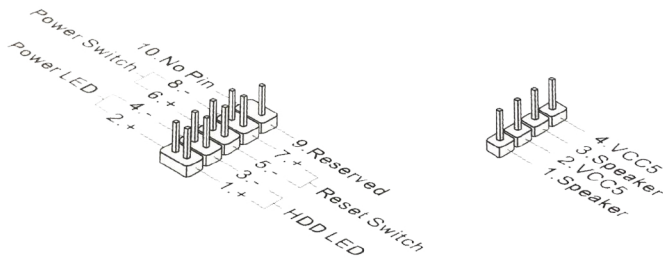
1. There is only one gap in the center of the memory module, and the memory will be correctly installed into the slot.
2. Insert the memory module vertically into the DIMM slot, and push it in until the gold finger of the memory module is fully inserted. When the memory module is fully in place, the plastic bayonet on both sides will automatically close. If you insert the memory correctly, Nini will not see the goldfinger part.
3. Manually check whether the memory module is locked by the slot clip.



Notice

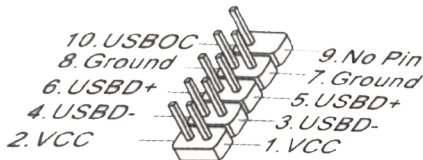
F_PANEL/SKEAKER:Front panel interface:

The mainboard provides links to the chassis panel and indicators.



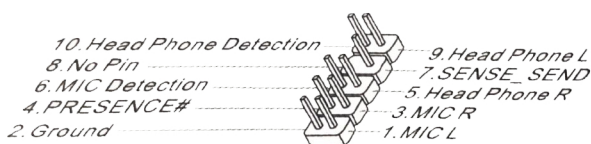
F_USB1/F_USB2 Insert Pin:

This interface is compatible with the I/O front panel connection specifications. It can connect to the high-speed USB peripheral interface. Such as USB HDD, digital camera, MP3 player, printer, debugging demodulator, etc.



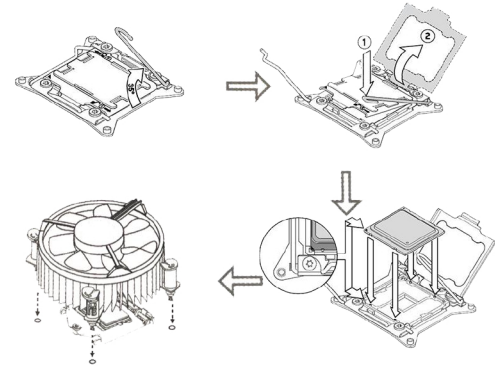
Audio: Front panel audio interface:

This interface can connect front panel audio.



Installing cpus and fans

When installing a CPU, ensure that the CPU is in good condition and the mainboard pins are correct.



1. Open the nail hook.
2. Pull the rod to the fully open position.
3. Remove the plastic cover, insert the CPU into the slot, and hold the bottom edge of the CPU tightly. Note that it must correspond to CPU notch.
4. Gently press the tie rod against the bearing plate and close the tie rod.
5. Hook the pressure rod with the hook on the side of the base.
6. Before installing the fan, ensure that the four nails are properly installed. Align the mounting holes on the fan and mainboard. Press the fan down hard until the four nail hooks are jammed into the four holes on the motherboard.
7. Press down the four nail hooks to secure the fan. Flip the motherboard to determine if the four nail hooks have been inserted correctly.
8. Connect the power cable of the CPU fan to the power port of the CPU fan on the mainboard.

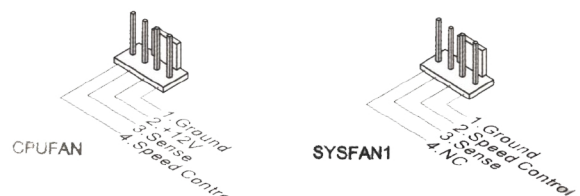
Notice

As long as the CPU is not installed, put a plastic protective cover over the CPU slot to avoid damage to the slot.

The contents of this manual are for reference only, and the statements and information in this manual do not constitute any form of guarantee.

CPUFAN,SYSFAN1: Fan power interface

The fan power port supports +12V system cooling fans. If your motherboard has an integrated system hardware monitoring chip, you must use a specially designed fan that supports fan speed detection to use the CPU fan control feature. Remember to connect all system fans, some system fans may not connect to the motherboard, you can connect directly to the power supply. The system fan can be plugged into any available system fan port.



BIOS Settings

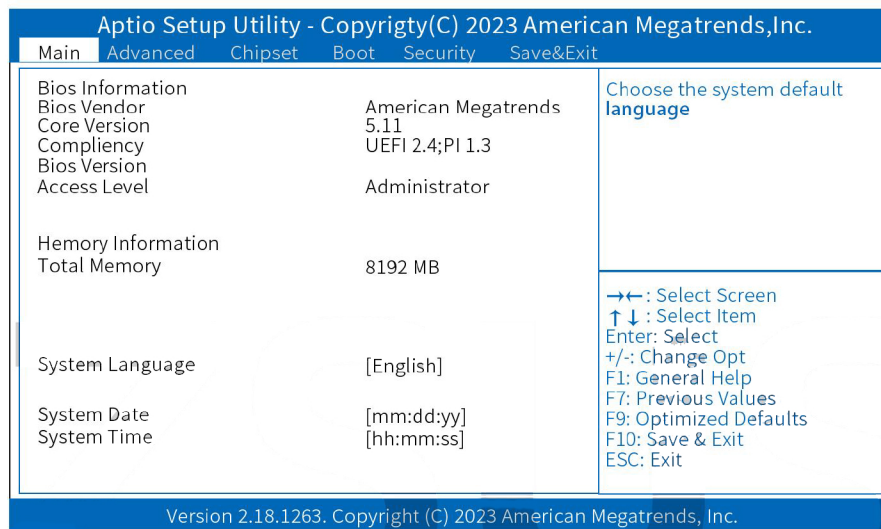
After powering up the computer, the system will begin the POST (power-on self-test) process. When the following information appears on the screen, press the key to enter the Bios setup program.

Press <F7> to enter the USB flash drive for quick boot.

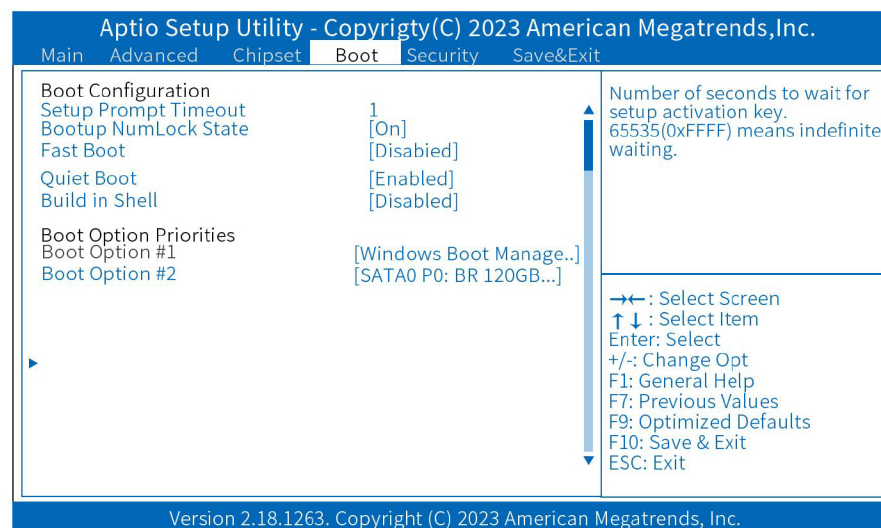
Press DEL to enter SETUP

If this information disappears as soon as you react and you still need to enter Setup, shut down and restart the system by pressing the RE SET key on the chassis. You can also restart your system by pressing the <Ctrl>, <Alt>, and <Delete> keys at the same time.

Main Page Use this menu to provide basic system configuration such as time, date, etc.



Boot: Use this menu to set USB drive boot options



NOTICE

Due to logistics reasons, the battery of this motherboard has been removed. Please purchase the CR2032 3V battery and install it.